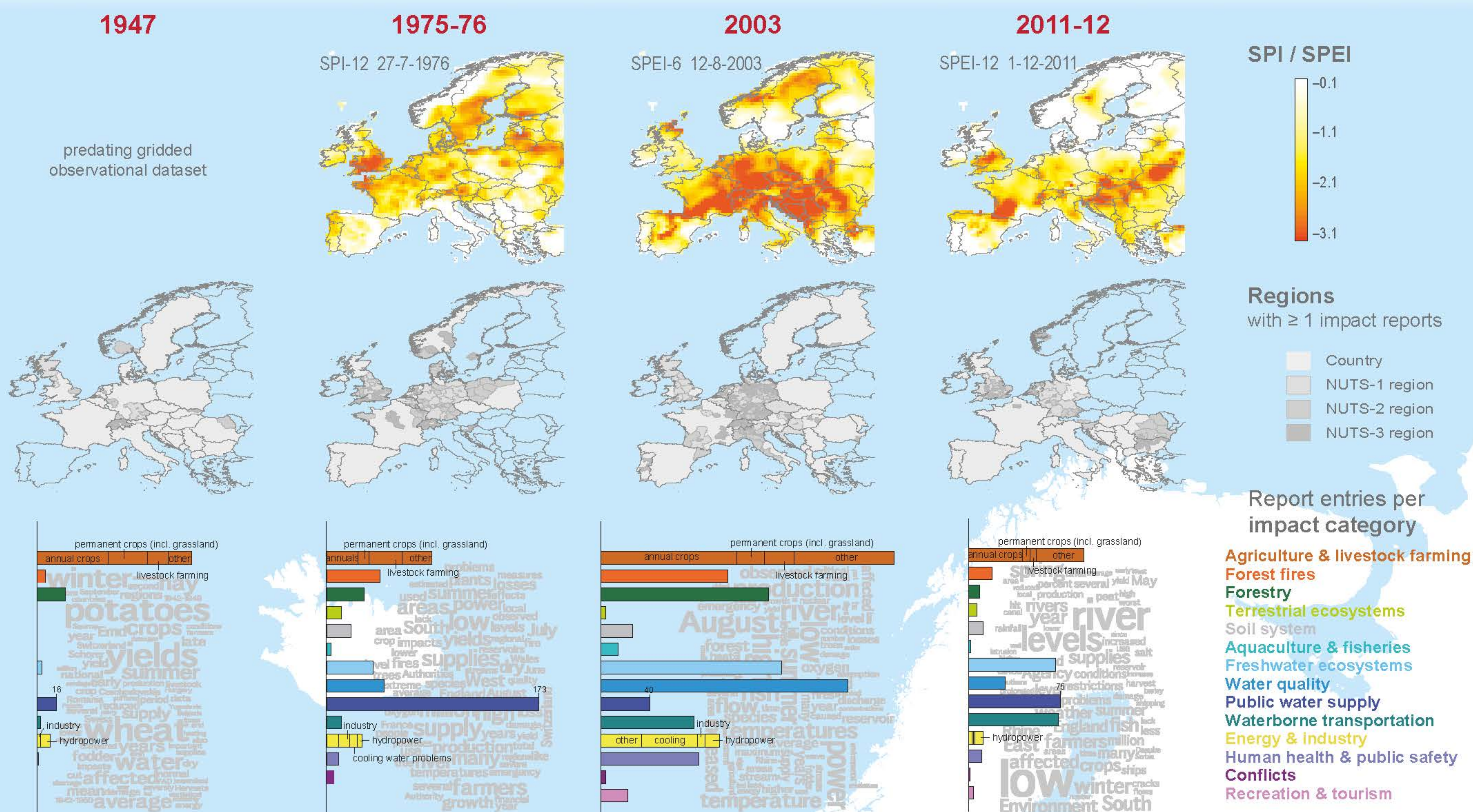


The European Drought Impact report Inventory

EDII: major drought events

I. Kohn⁽¹⁾, J.H. Stagge⁽²⁾, V. Blauhut⁽¹⁾, S. Bachmair⁽¹⁾, K. Stahl⁽¹⁾, L.M. Tallaksen⁽²⁾

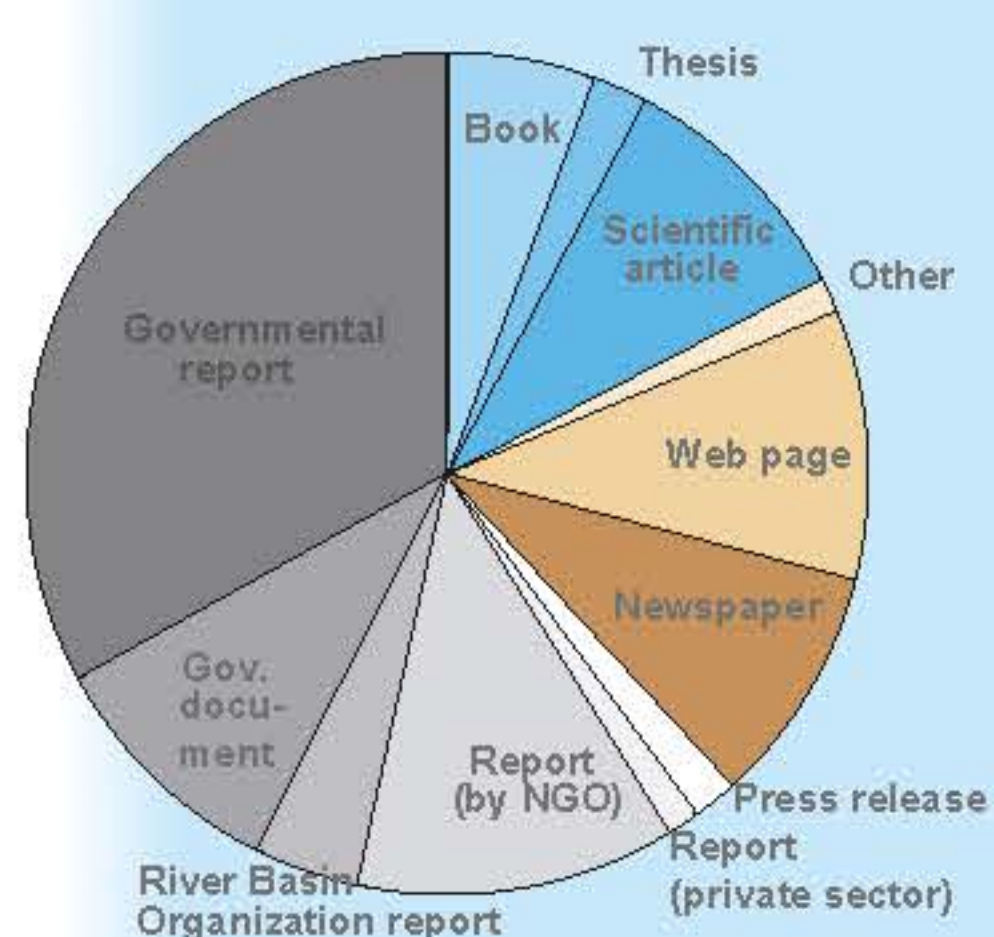
UiO : University of Oslo



EDII – European drought impact report inventory

EDR – European drought reference database

Report sources



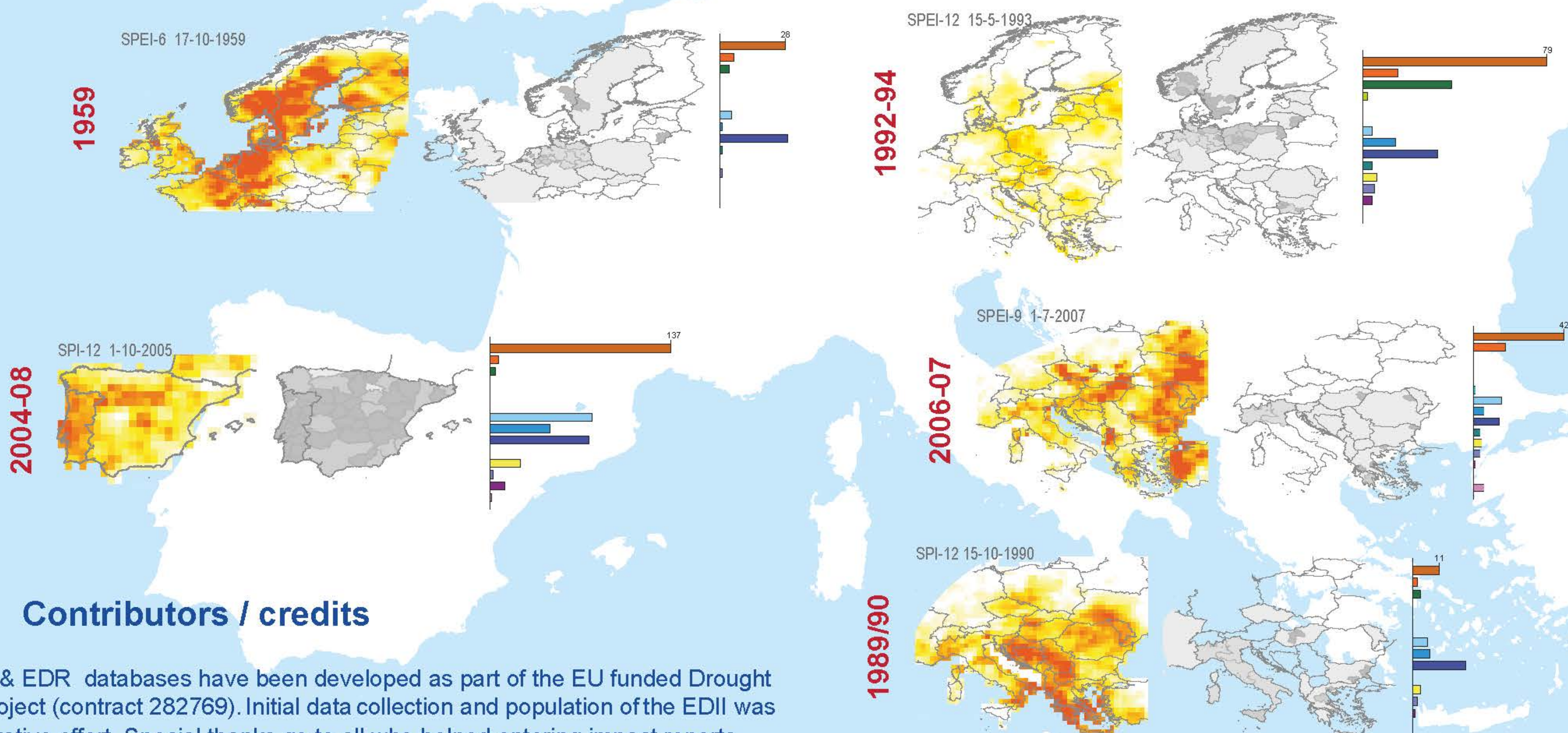
Drought causes diverse **negative economic, environmental, and social effects**. To foster cross-disciplinary research, the EDII aims to compile knowledge on such impacts of historical and recent droughts from various **textual information sources**. Currently the inventory includes more than 2600 impact report entries. Based on the information in the underlying original report, each EDII impact report entry is

- referenced in **time**
- referenced **geographically** using the NUTS system (Nomenclature of Units for Territorial Statistics),
- assigned to an **impact category** and sub-type,
- and described by short **text**.

The EDR website (www.geo.uio.no/edc/droughtdb/) is designed to consolidate detailed information about historical large-scale drought events in Europe using climatological and hydrological drought indicators, and particularly the **Standardized precipitation (evaporation) indices** (SPI and SPEI) shown here.

Future directions

A holistic view relating hydrometeorological analysis of drought hazards to impacts is highly needed. The EDR & EDII database will be made **publically available** for use and online impact reporting soon. Hopefully, it will grow with further **participation and contributions**, which are welcomed at any time.



Contributors / credits

The EDII & EDR databases have been developed as part of the EU funded Drought R&SPI project (contract 282769). Initial data collection and population of the EDII was a collaborative effort. Special thanks go to all who helped entering impact reports.